

DESK TRIM

Cutting 0,6 mm
Size from 650 mm to 1500 mm



Desk Trim and Desk trim plus are compact and robust manual cutter suitable as entry-level solution

DESK TRIM

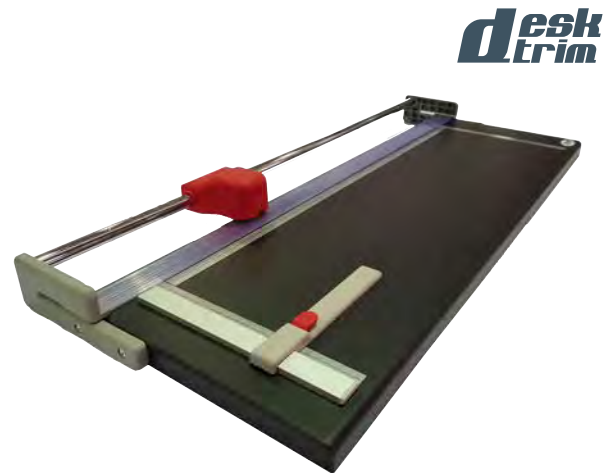
Rotary blade in hardened steel.
Reference set-square.



0,6 mm
max cutting thickness



65/80/100 cm
cutting size



desk
Trim

DESK TRIM PLUS

Square sliding bar.
Reference set-square.

Optionals:

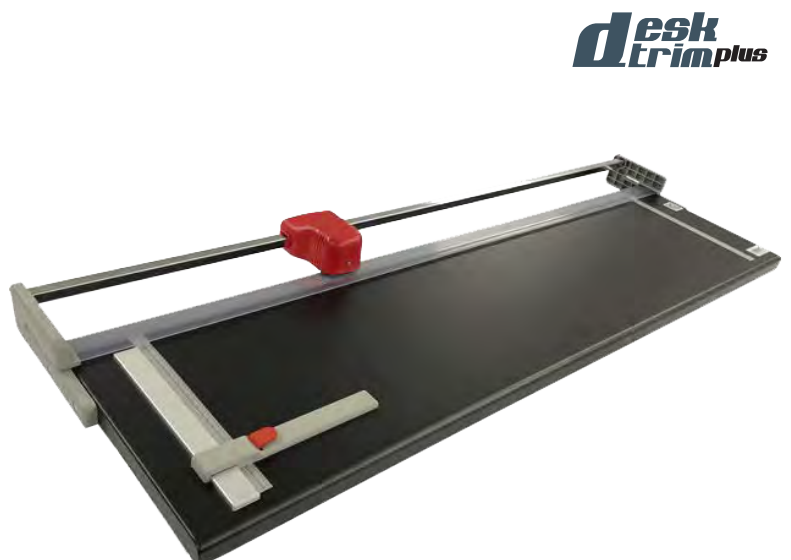
→ Tubular support with adjustable feet and collecting fabric basket (only for mod 130 - 150).



0,6 mm
max cutting thickness



100/130/150 cm
cutting size



desk
Trim plus

STANDARD INCLUDED

- ☑ Steel working plane
- ☑ Blade holder carriage sliding on bearings.
- ☑ Rotary blade in hardened steel.
- ☑ Metallic parts varnished with epoxydic powder.